

SHARE-CZ

Radim Boháček
CERGE-EI

February 15, 2022

The Survey of Health, Ageing and Retirement in Europe

SHARE-ERIC

- ▶ Representative panel survey
- ▶ 140,000 respondents age 50+
- ▶ 28 European countries and Israel
- ▶ 9 panel waves since 2004
- ▶ Effects of health, social, economic and environmental policies over the life-course of European citizens

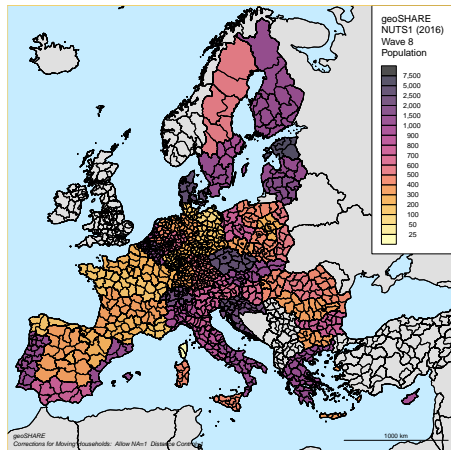


Figure: SHARE sample in NUTS1

The Survey of Health, Ageing and Retirement in Europe

SHARE-ERIC

- ▶ Long-term panel
- ▶ Multidisciplinary
- ▶ Harmonised (HRS, ELSA)
- ▶ Life history
- ▶ HCAP
- ▶ Biomarkers
- ▶ Open access microdata

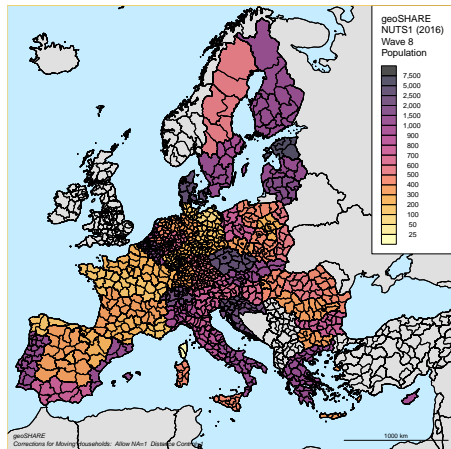


Figure: SHARE sample in NUTS1

SHARE Main Topics

- ▶ Income and wealth
- ▶ Health
- ▶ Health care
- ▶ Work and retirement
- ▶ Social networks
- ▶ Cognitive functions
- ▶ Physical measurements



Release Guide 8.0.0

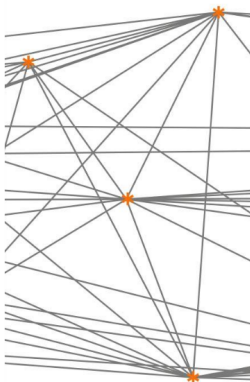


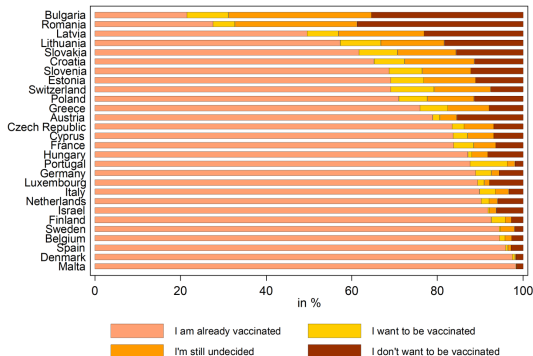
Figure: SHARE Public Release February 2022



COVID-19 SHARE Surveys

- ▶ Summer 2020 and 2021 + Fall 2020 in CZ
- ▶ SES dimension of health
- ▶ 55,000 respondents
26 countries
- ▶ Link to panel data
- ▶ Behavioral parameters for ABM and SEIR models

Vaccination rates (summer 2021)

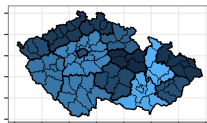


COVID-19 SHARE Survey

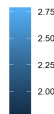
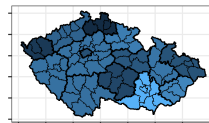
- ▶ Health
- ▶ Health care
- ▶ Behavior
- ▶ Activities
- ▶ Social networks
- ▶ Link to panel data

Social network contacts per day

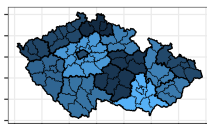
Age 50-64



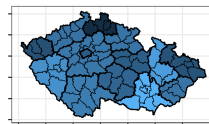
Age 65+



Female



Male

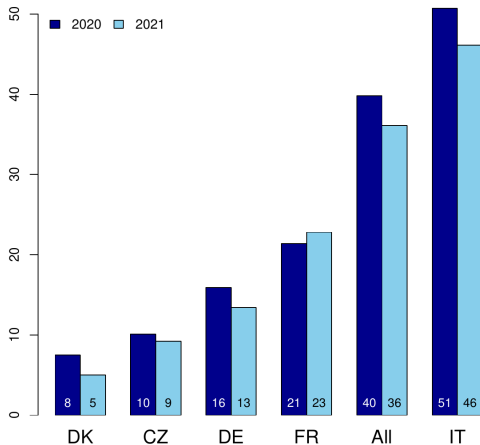


Data: SHARE-CZ

Effects on Income

- ▶ Summer 2020
Summer 2021
- ▶ % of population
- ▶ Covid effect on
financial distress
- ▶ Economic vulnerability
- ▶ Income inequality

Financial distress (in %)

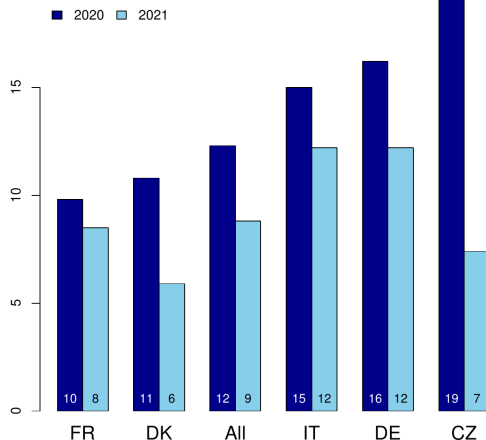


Health care deficit

Health care:

- ▶ Forgone
- ▶ Postponed
- ▶ Denied
- ▶ Access and quality

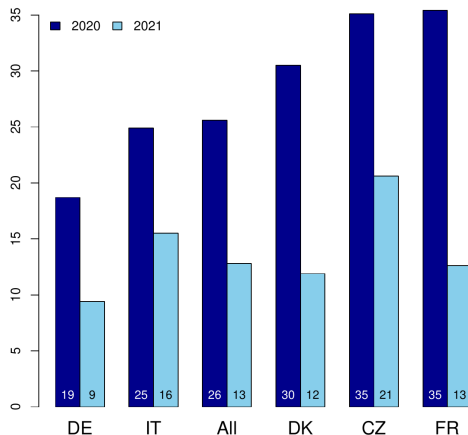
Forgone health care (in %)



Health care deficit

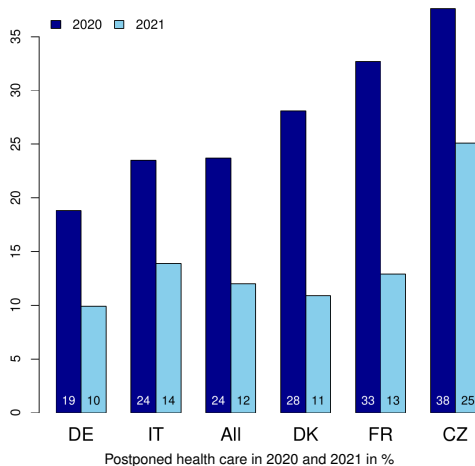
- ▶ Postponed health care
- ▶ Mostly special medical treatment
- ▶ Short- and long-term effects
- ▶ Unrelated:
Income, age, education

Postponed health care (in %)



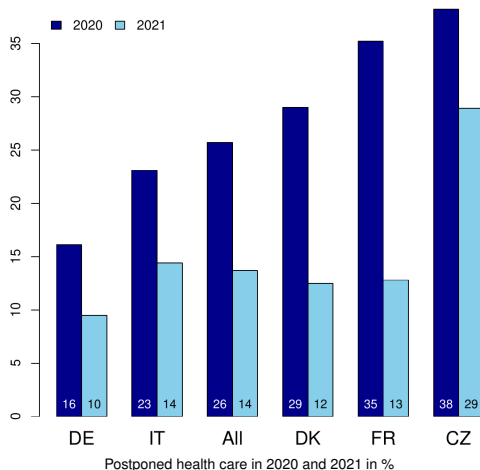
Health care deficit

- ▶ Postponed health care
- ▶ Gender: Males



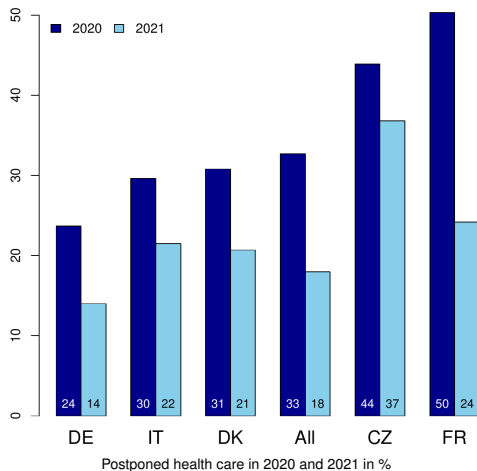
Health care deficit

- ▶ Postponed health care
- ▶ Low net wealth



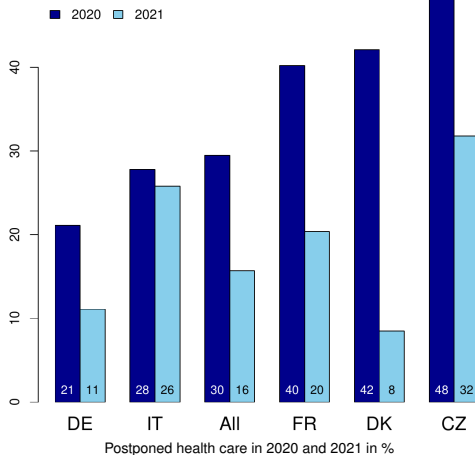
Health care deficit

- ▶ Postponed health care
- ▶ Past hospitalization



Health care deficit

- ▶ Postponed health care
- ▶ IADL
(Instrumental activities of daily living)



Policy Interventions: Understanding Non-Intended Consequences

- ▶ Health, economic and social relationships
- ▶ Complex interactions
- ▶ Representative multidisciplinary data
- ▶ Scientific and social dimensions
- ▶ Interpretation and communication
- ▶ Administrative data
- ▶ Legislature and policy

SHARE Future

- ▶ New topics
- ▶ New modes of fieldwork
- ▶ Flexibility
- ▶ Geographic data
- ▶ Objective measures: biomarkers
- ▶ Linkage to administrative data

Wave 10: SHARE Biomarkers

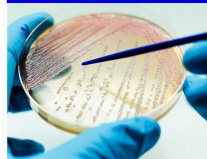
- ▶ Collaboration
RECETOX, HAPIEE
- ▶ Complementing self-reported
survey data
- ▶ Assays linked to SHARE panel
data
- ▶ Open access

RECETOX Central Laboratories

Trace analytical laboratory

Our accredited laboratories provide the analytical background for the research programmes of the RECETOX centre and provide the advanced analytical services to our research teams, as well as to external clients. The laboratories also realize long-term monitoring programs of various matrices.

[More about the Trace analytical laboratory](#)



Microbiome analytical laboratories

The laboratories provide the analysis of the microbiome of human (stool, buccal swabs, meconium etc.) and environmental (dust, water, soil) samples, using modern methods and continuously developing expertise of our specialists.

[More about the microbiome labs](#)

Biomarker analytical laboratories

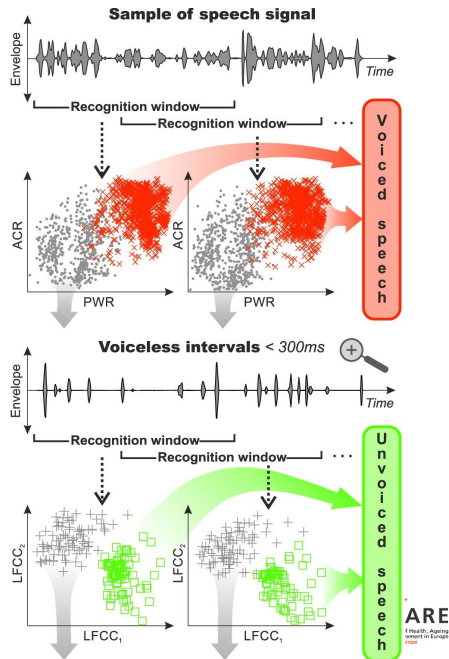
The laboratories are a new part of the RECETOX research infrastructure. The laboratories provide analyzes using proven bioanalytical methods and further develop new analytical techniques, which are available broad range of users.

[More about biomarker laboratories](#)



Wave 10: SHARE Neurology

- ▶ Collaboration UK, CVUT
- ▶ Healthy and active ageing
- ▶ Early markers
- ▶ Neurodegenerative diseases
- ▶ Speech test (Rusz 2017)



Wave 10: SHARE Neurology

- ▶ Collaboration
UK, CVUT
- ▶ Healthy and active ageing
- ▶ Early markers
- ▶ Neurodegenerative diseases
- ▶ Smell test



Figure: Le Nez du Vin and Nez du Whisky

SHARE-ERIC

- ▶ Research service
- ▶ Foundation of empirical research on ageing
- ▶ Open access data
- ▶ Cooperation
- ▶ Participation of external researchers

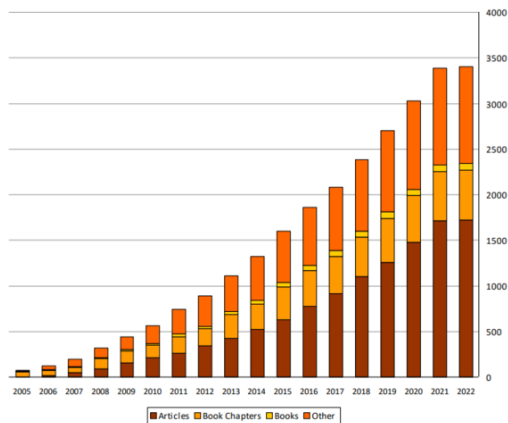


Figure: Publications by registered users

SHARE-CZ

- ▶ www.share-project.org
- ▶ <https://www.share.cerge-ei.cz>
- ▶ radim.bohacek@cerge-ei.cz