



MINISTRY OF EDUCATION,  
YOUTH AND SPORTS

# European Strategy Forum on Research Infrastructures - Evaluation and Monitoring

**Petr Ventluka**  
Ministry of Education, Youth and Sports



MINISTRY OF EDUCATION,  
YOUTH AND SPORTS

## CONTENT

1. Lifecycle approach
2. Evaluation of new proposals
3. Monitoring of ESRI projects



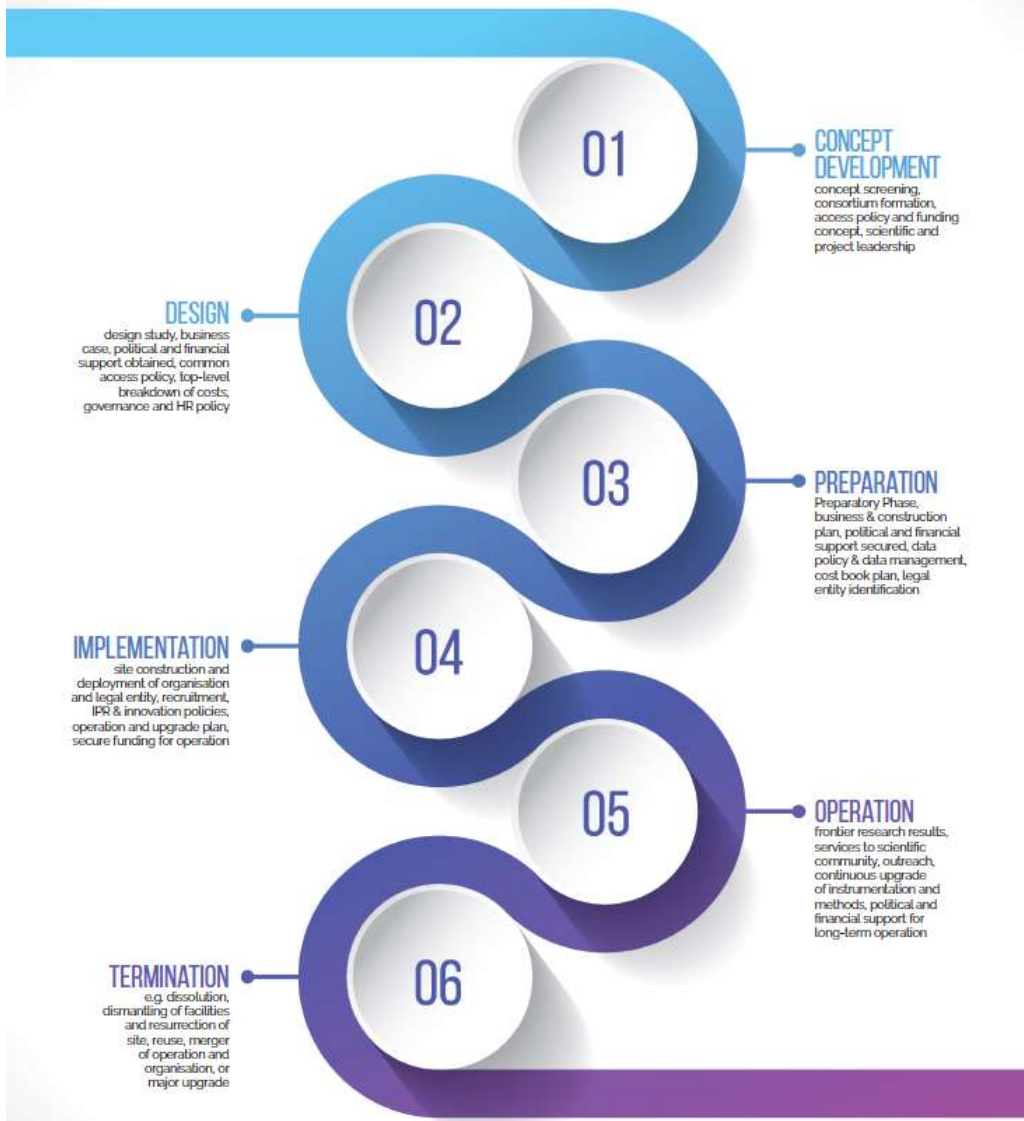


FIGURE 1.  
Lifecycle approach

## LIFECYCLE APPROACH

„The evolution in time of **ESFRI Projects** and **ESFRI Landmarks** and the needs and targets of the RI implementation are understood as a sequence of phases from the **CONCEPT** to **OPERATION** and to **TERMINATION**.“

*Giorgio Rossi*

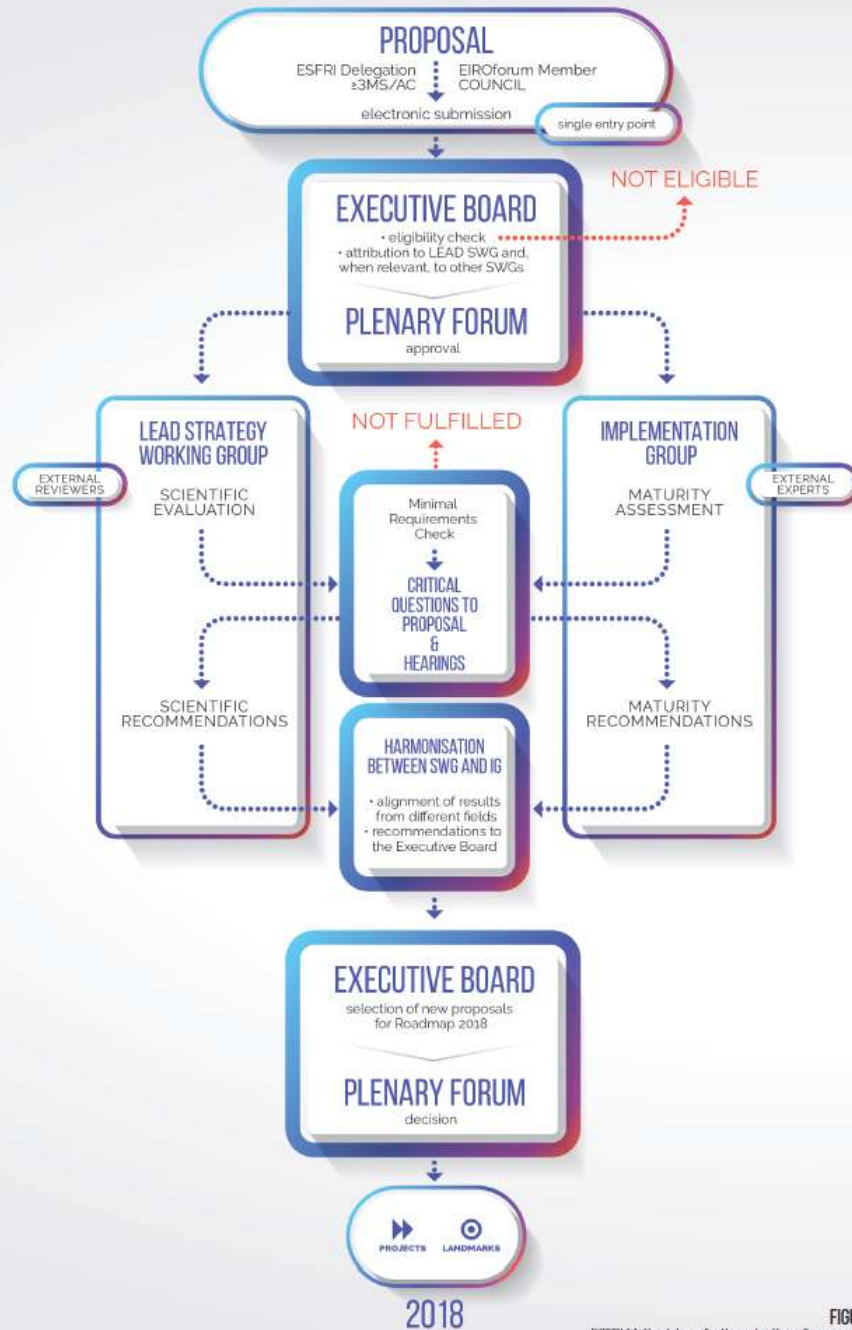


FIGURE 3. ESFRI Methodology for the selection of new proposals

## EVALUATION OF NEW PROPOSALS I

1. Submitted proposals (all eligible) underwent the two parallel and independent evaluation processes run by SWGs and IG, also involving independent external experts.
2. The SWGs and IG identified several critical questions about each proposal, and then liaised to achieve a common list of issues.
3. Those proposals that met minimal requirements to be considered for the Roadmap, were invited to dedicated hearing sessions.

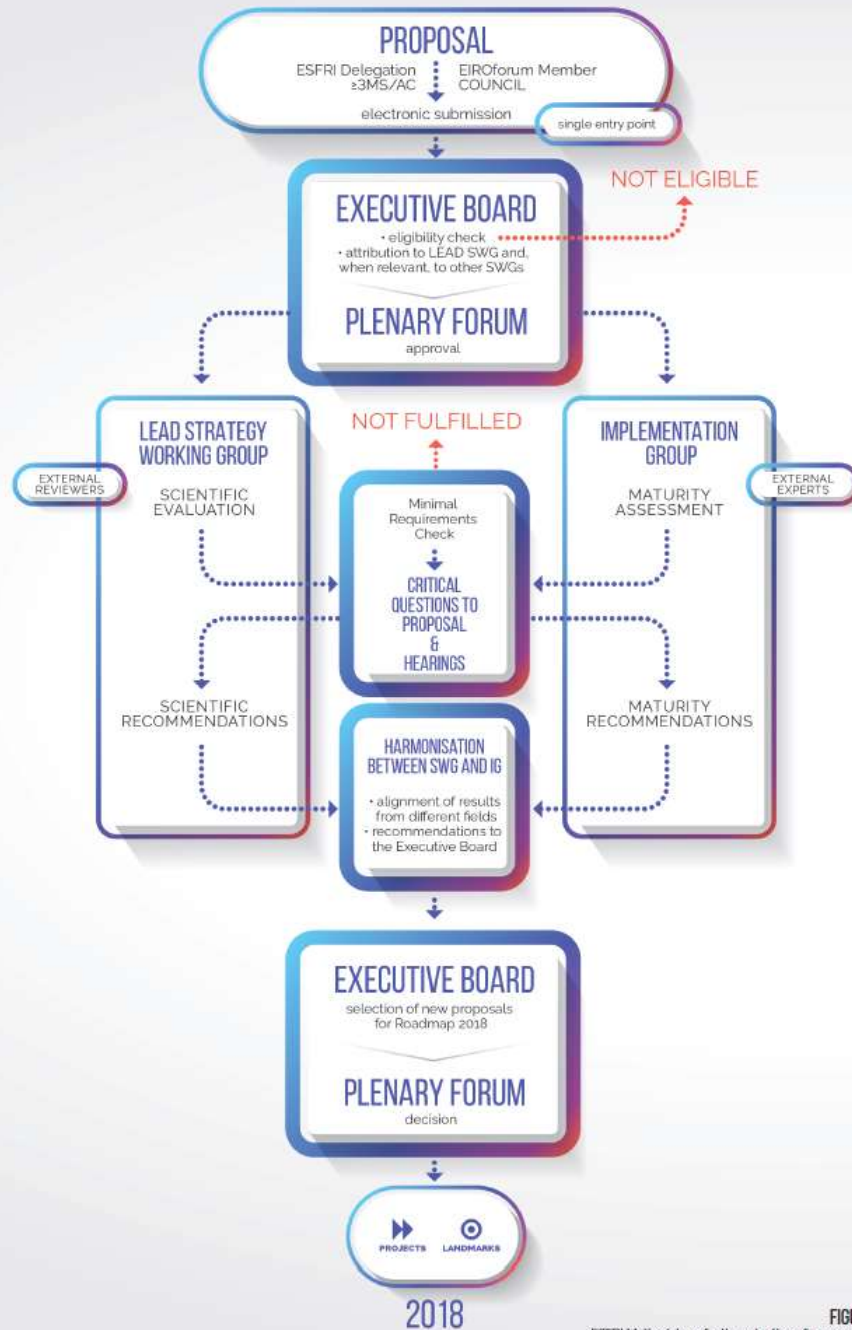


FIGURE 3.  
ESFRI Methodology for the selection of new proposals

## EVALUATION OF NEW PROPOSALS II

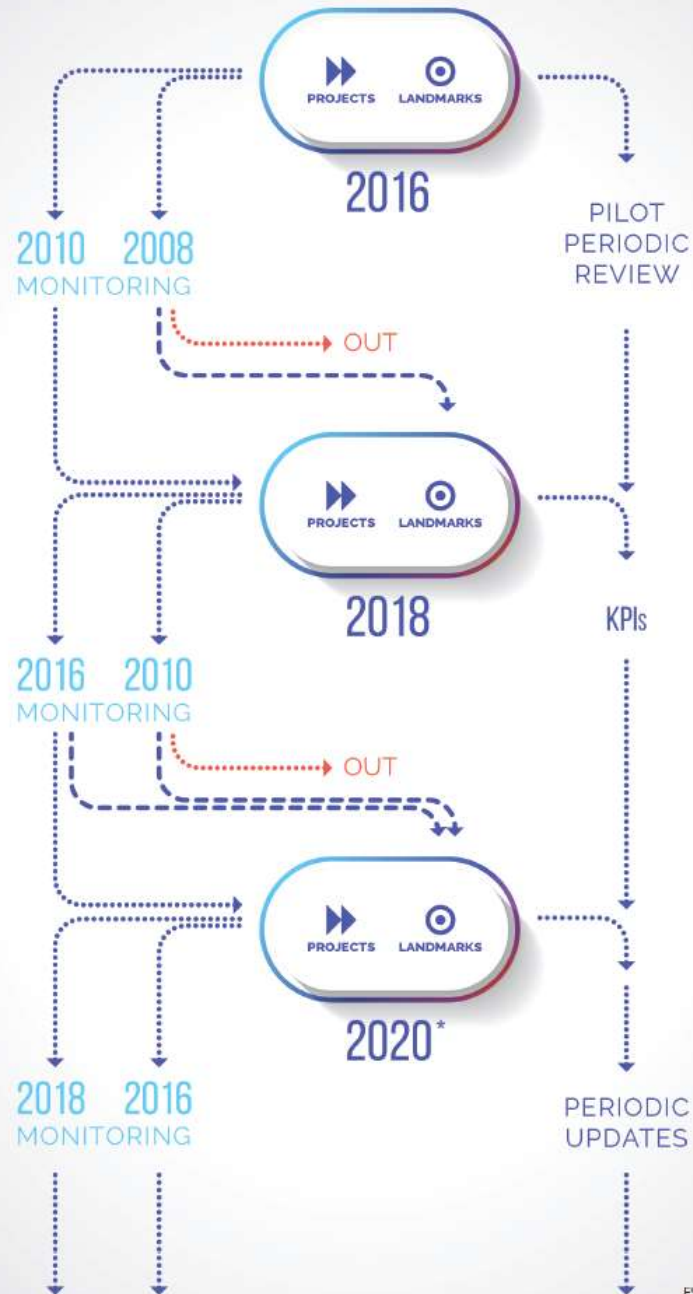
4. The harmonization of the results on scientific excellence and maturity by WG Chairs and EB and subsequent strategy analysis by the EB led to the recommendation of some proposals for inclusion in the Roadmap while the rest did not meet the minimal requirements.
5. Among the projects not being ready for inclusion, areas of research of High Strategic potential in the field of Social & Cultural Innovation were identified, as it is described in the Landscape section.



MINISTRY OF EDUCATION,  
YOUTH AND SPORTS

## MONITORING OF ESFRI PROJECTS I

- Mandate of ESFRI from Competitiveness Council (5/2018)
- ESFRI MOS – ESFRI Research Infrastructures Monitoring System
- Inclusion of SWGs, IG and external experts during evaluation
- Working group on monitoring of research infrastructures performance (WG Monitoring)
- Ad hoc WG for limited time period (11/2018 – late 2019)
- Monitoring of RI as a key for an effective strategy for the Long-Term Sustainability of RIs (analyzed by the ESFRI WG in 2017)
- Objective: consolidate the existing knowledge on monitoring of RI performance, propose a common approach at European level and explore options to support this through the use of Key Performance Indicators (KPIs). Such KPIs must be easy to use, shall be adjustable to different systems and types of RIs (new as well as existing) and yet robust to ensure high a level of confidence. They could serve as one element of the monitoring carried out by RIs and their governance bodies to monitor their performance.



## MONITORING OF ESFRI PROJECTS II

1. Projects have **10 years** of residency on the Roadmap to reach implementation: those that do not meet this goal are removed from the Roadmap.
2. Check of the overall progress towards implementation according to the fulfilment of minimal key requirements as defined in the ESFRI Roadmap Guide.
3. Advices to the Projects and recommendations to the Forum, including the possible promotion of Projects to the status of Landmark.

FIGURE 2.  
ESFRI Roadmap Dynamics

\* according to the ten-year rule the ESFRI Projects 2010 will be monitored in view of next Roadmap update that will be carried out in 2020.



MINISTRY OF EDUCATION,  
YOUTH AND SPORTS

# MONITORING OF ESFRI PROJECTS III

## Assessment criteria:

### ➤ Scientific case:

- Scientific excellence
- Pan-European relevance
- Socio-economic impact
- E-needs

### ➤ Implementation:

- Stakeholder commitment
- User strategy and access policy
- Preparatory work
- Planning
- Governance and management
- Human resources policy
- Finances
- Risks

### ➤ Overall conclusions and recommendations

REF	TITRE	TYPE	DATE DE DÉBUT	DATE DE FIN	ÉTAT	COÛT (M€)	COÛT RÉEL (M€)	COÛT RÉEL / COÛT PRÉVU (%)
ESFRI_01	European Carbon Dioxide Capture and Storage Laboratory Infrastructure	distributed	2008	2018	2008	1000	1000	100
ESFRI_02	Jules Horowitz Reactor	single-lead	2006	2022	2006	1800	NA	NA
ESFRI_03	Next generation European Incoherent Scatter radar system	single-lead	ESCAT Scientific Foundation, 2007	2008	2022	123	5,1	
ESFRI_04	European Multi-Bioscience Surface and Infrastructure Observatory	distributed	ESFRI, 2008	2008	2018	300	30	
ESFRI_05	European Polar Observing System	distributed	ESFRI, 2008	2008	2027	500	18	
ESFRI_06	European contribution to the International Age Programme	distributed	ESFRI, 2004	2006	2014	51	5	
ESFRI_07	Ice-sea-iceberg for a Global Observing System	distributed	ESFRI, 2004	2006	2014	14,2	7	
ESFRI_08	Integrated Carbon Observation System	distributed	ESFRI, 2005	2006	2018	138	242	
ESFRI_09	e-Infrastructure for Biodiversity and Ecosystem Research	distributed	ESFRI, 2007	2006	2017	161	12	
ESFRI_10	Behavioral and Biobehavioral Research Infrastructure	distributed	ESFRI, 2003	2006	2014	106	15,5	
ESFRI_11	European Advanced Translational Research Infrastructure in Medicine	distributed	ESFRI, 2003	2006	2013	500	2,5	
ESFRI_12	European Clinical Research Infrastructure Network	distributed	ESFRI, 2003	2006	2014	5	5	
ESFRI_13	A distributed infrastructure for life-science information	distributed	ESFRI Consortium Agreement, 2002	2006	2014	125	16	
ESFRI_14	European Marine Biological Resource Centre	distributed	ESFRI, 2008	2008	2017	164,4	13,2	
ESFRI_15	European Research Infrastructure on Highly Pathogenic Agents	distributed	ESFRI, 2007	2008	2018	1,8	17,7	
ESFRI_16	European Infrastructure of Open-Source Platforms for Chemical Biology	distributed	ESFRI, 2008	2008	2017	62,1	1,2	
ESFRI_17	European Research Infrastructure for Imaging Technologies in Biological and Biomedical Sciences	distributed	ESFRI, 2008	2008	2018	140	1,8	
ESFRI_18	European Research Infrastructure for the Generation, Characterization, and Testing of Biobank-derived disease models	distributed	ESFRI, 2008	2008	2013	180	30	
ESFRI_19	Integrated Structural Biology Infrastructure	distributed	ESFRI, 2007	2006	2017	400	30	
ESFRI_20	Cherenkov Telescope Array	single-lead	ESFRI, 2004	2008	2017	400	30	
ESFRI_21	Extreme Light Infrastructure	distributed	ESFRI, 2003	2006	2018	800	90	
ESFRI_22	Extreme Light Telescope	single-lead	ESFRI, 2003	2006	2017	1100	48	
ESFRI_23	European Magnetic Field Laboratory	distributed	ESFRI, 2005	2008	2014	170	20	
ESFRI_24	European Synchrotron Radiation Facility	single-lead	ESFRI, 2008	2017	128	12		
ESFRI_25	European Spallation Source	single-lead	ESFRI, 2005	2006	2027	1840	140	
ESFRI_26	European XFEL	single-lead	European XFEL, 2004	2017	1460	138		
ESFRI_27	Facility for Antiproton and Ion Research	single-lead	ESFRI, 2008	2008	2027	NA	134	
ESFRI_28	High-Luminosity Large Hadron Collider	single-lead	ESFRI, 2008	2017	1408	136		
ESFRI_29	Infiniti Marine Laser-Paul Langevin	single-lead	ESFRI, 2008	2017	188	17		
ESFRI_30	Square Kilometer Array	single-lead	ESFRI, 2004	2027	1000	77		
ESFRI_31	Systems de Production d'ions D'accléner en Ligne de 4e génération	single-lead	ESFRI, 2006	2017	261	5		
ESFRI_32	Consortium of European Social Science Data Archives	distributed	ESFRI, 2007	2006	2013	127	76	
ESFRI_33	Common Language Resources and Technology Infrastructure	distributed	ESFRI, 2002	2006	2012	NA	14	
ESFRI_34	Digital Research Infrastructure for the Arts and Humanities	distributed	ESFRI, 2004	2006	2017	NA	17	
ESFRI_35	European Social Survey	distributed	ESFRI, 2003	2006	2013	NA	15,5	
ESFRI_36	Survey of Health, Ageing and Retirement in Europe	distributed	ESFRI, 2003	2006	2013	160	18	
ESFRI_37	Partnership for Advanced Computing in Europe	distributed	ESFRI, 2004	2006	2010	500	10	





MINISTRY OF EDUCATION,  
YOUTH AND SPORTS

**Thank you for your attention!**

**Petr Ventluka**

**Department of Research and Development**

**Ministry of Education, Youth and Sports**

**Karmelitská 529/5, 118 12 Prague 1**

**Czech Republic**

**Tel.: +420 234 811 524**

**E-mail: [petr.ventluka@msmt.cz](mailto:petr.ventluka@msmt.cz)**